

SENTURY TIRE

Del avión a los neumáticos de lujo



Para mayor información por favor escribenos a contactoinsumos@skc.cl
y nos pondremos en contacto.

Avda. Presidente Eduardo Frei Montalva (Ruta 5 Norte), 15.800, Lampa, Santiago, Chile.

Síguenos en nuestras Redes Sociales



PCR/UHP Qirin 990 width>175



PRODUCT INTRODUCTION



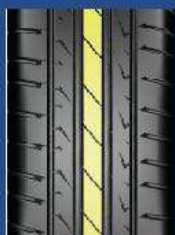
※ ASYMMETRIC DESIGN

Asymmetric and simple pattern can respond quickly when accelerate. Large blocks of outside design provide excellent steering performance, opened grooves of inside provide perfect hydroplaning performance.



※ Drainage performance

Four wide main grooves can effectively discharge water, ensure wet performance.



※ High-speed handling stability

The strong center rib can ensure straight performance at high speed, provide stability performance.



※ OPTIMIZED VOID RATIO AND OPTIMIZED SILICA-ENRICHED COMPOUND

Optimized void ratio and the optimized silica-based compound provide superior traction and grip in both wet and dry conditions, reduce rolling resistance and make the driving more fuel-efficient.



※ SIPES & 3D CUTTING ANGLE DESIGN

Cutting edge of groove can effectively increase contact area during braking and acceleration, and increase heat dissipation to maximize the block durability.



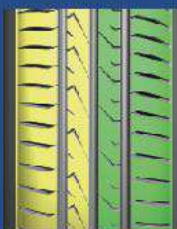
※ Quiet and comfortable performance

5-frequency block arrangement of computer optimization and 2-pitch arrangement design effectively reduce the pattern noise, providing comfortable driving performance.

PCR/UHP Qirin 990 width≤175



PRODUCT INTRODUCTION



※ ASYMMETRIC DESIGN

Asymmetric and simple pattern can respond quickly when accelerate. Large blocks of outside design provide excellent steering performance, opened grooves of inside provide perfect hydroplaning performance.



※ OPTIMIZED VOID RATIO AND OPTIMIZED SILICA-ENRICHED COMPOUND

Optimized void ratio and the optimized silica-based compound provide superior traction and grip in both wet and dry conditions, reduce rolling resistance and make the driving more fuel-efficient.



※ Quiet and comfortable performance

5-frequency block arrangement of computer optimization and 2-pitch arrangement design effectively reduce the pattern noise, providing comfortable driving performance.



※ Drainage performance

Four wide main grooves can effectively discharge water, ensure wet performance.



※ SIPES & 3D CUTTING ANGLE DESIGN

Cutting edge of groove can effectively increase contact area during braking and acceleration, and increase heat dissipation to maximize the block durability.

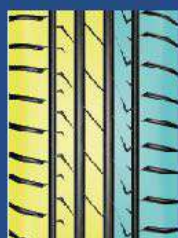
Series	Size	LI SI	Approved Rim	Tread Depth 1/32" MM		Overall Diameter inch mm		Section Width inch mm		Max.Load lbs kg		Max.Pressure psi kpa		Revs Per Mile	UTQG
60	175/60R15	81H	5.0-5.5	9.4	7.5	23.3	591	7.0	177	1019	462	44	300	893	520AA
65	165/65R15	81H	4.5-5. -5.5	9.4	7.5	23.4	595	6.7	170	1019	462	44	300	887	520AA
	175/65R15	84H	5.0-5.5	9.4	7.5	24.0	609	7.0	177	1102	500	44	300	866	520AA

Bold designates measuring rim width. These data can be changed by manufacturer without prior notice.

PCR/UHP Qirin 990 (RFT)



PRODUCT INTRODUCTION



※ ASYMMETRIC DESIGN

Asymmetric and simple pattern can respond quickly when accelerate. Large blocks of outside design provide excellent steering performance, opened grooves of inside provide perfect hydroplaning performance.



※ Drainage performance

Four wide main grooves can effectively discharge water, ensure wet performance.



※ High-speed handling stability

The strong center rib can ensure straight performance at high speed, provide stability performance.



※ OPTIMIZED VOID RATIO AND OPTIMIZED SILICA-ENRICHED COMPOUND

Optimized void ratio and the optimized silica-based compound provide superior traction and grip in both wet and dry conditions, reduce rolling resistance and make the driving more fuel-efficient.



※ SIPES & 3D CUTTING ANGLE DESIGN

Cutting edge of groove can effectively increase contact area during braking and acceleration, and increase heat dissipation to maximize the block durability.



※ Quiet and comfortable performance

5-frequency block arrangement of computer optimization and 2-pitch arrangement design effectively reduce the pattern noise, providing comfortable driving performance.

SUV Qirin 990 SUV



PRODUCT INTRODUCTION



※ Symmetrical pattern

The symmetrical pattern designed for SUV vehicle is simple and generous. The high-density grooves and sipes can effectively improve the drainage performance and ensure the driving safety of the wetland.



※ Drainage performance

Four wide main grooves can effectively discharge water, ensure wet performance.



※ All season performance

Application of new 3D sipes technology takes into account the high-efficiency drainage performance and the moderate stiffness of the block to provide all season performance.



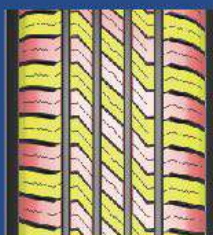
※ Optimized void ratio and optimized silica-enriched compound

Optimized void ratio and the optimized silica-based compound provide superior traction and grip in both wet and dry conditions, reduce rolling resistance and make the driving more fuel-efficient.



※ 3D cutting angle design

3D Cutter chamfer design, increase ground contact area to enhance braking force, and effectively increase tire heat dissipation area, and improve the tire durability.



※ Quiet and comfortable performance

Computer-optimized composite variable pitch pattern block design effectively reduces pattern noise and provides a comfortable ride.

SUV Qirin 990 SUV(RFT)



PRODUCT INTRODUCTION



※ Symmetrical pattern

The symmetrical pattern designed for SUV vehicle is simple and generous. The high-density grooves and sipes can effectively improve the drainage performance and ensure the driving safety of the wetland.



※ Drainage performance

Four wide main grooves can effectively discharge water, ensure wet performance.



※ All season performance

Application of new 3D sipes technology takes into account the high-efficiency drainage performance and the moderate stiffness of the block to provide all season performance.



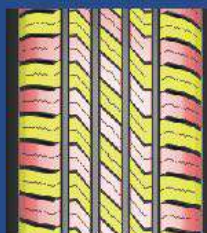
※ Optimized void ratio and optimized silica-enriched compound

Optimized void ratio and the optimized silica-based compound provide superior traction and grip in both wet and dry conditions, reduce rolling resistance and make the driving more fuel-efficient.



※ 3D cutting angle design

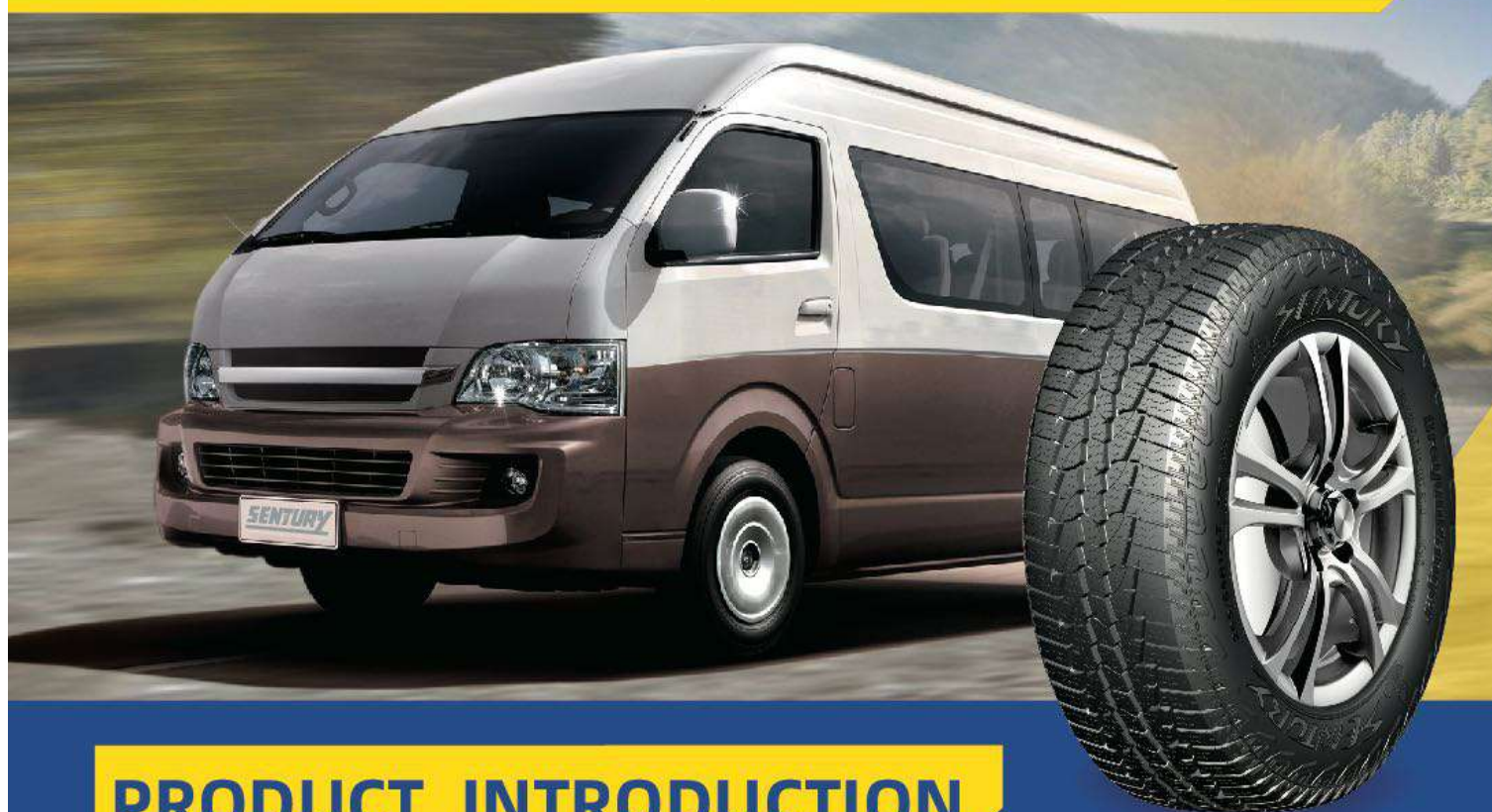
3D Cutter chamfer design, increase ground contact area to enhance braking force, and effectively increase tire heat dissipation area, and improve the tire durability.



※ Quiet and comfortable performance

Computer-optimized composite variable pitch pattern block design effectively reduces pattern noise and provides a comfortable ride.

DragonLoads

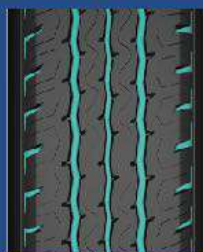


PRODUCT INTRODUCTION



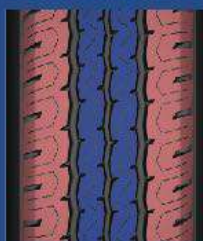
※ Easy to handle all kinds of road conditions

The unique zigzag three-groove design can disperse the stress evenly and extrude the stone in the groove to avoid wear on the pattern groove and make the tire easily adapt to all kinds of road conditions.



※ Excellent drainage performance

Wide main groove and shoulder transverse groove design can effectively discharge water, ensure wet performance.



※ Super load capacity

Continuous S-pattern block combined with reinforced shoulder design can improve the anti-overload ability of tire and effectively avoid early damage.



※ Wear resistance and longer mileage

The combination of high saturation and deep groove is designed with wear-resistant compound, which can increase the stiffness of the pattern block and provide longer mileage and service life.

Series	Size	LI	SI	PR	Approved Rim	Tread Depth 1/32" MM		Overall Diameter inch mm		Section Width inch mm		Max.Load S lbs kg		Max.Load D lbs kg		Max.Pressure psi kpa		Revs Per Mile
70	195/70R15LT	99	96S	8PR	5.5-6.0-6.5	14.1	11.2	25.8	655	7.9	201	1709	775	1565	710	65	450	805
	205/70R15LT	106	104S	8PR	5.5-6.0-6.5	14.1	11.2	26.3	669	8.2	209	2094	950	1984	900	65	450	789
	215/70R15LT	104	101S	8PR	6.0-6.5-7.0	14.1	11.2	26.9	683	8.7	221	1984	900	1819	825	65	450	772
75	215/75R16LT	107	104S	8PR	5.5-6.0-7.0	14.1	11.2	28.7	728	8.5	216	2149	975	1984	900	65	450	725

Bold designates measuring rim width. These data can be changed by manufacturer without prior notice.

DragonRanger



PRODUCT INTRODUCTION



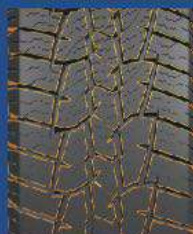
※ Z-type rib design

The strong Z-type middle rib design ensures stable handling performance and strong control power on non-paved roads, and maintains excellent traction on muddy roads.



※ zigzag groove design

The cross zigzag groove design provides the grip on wet and dry roads to ensure stability at high speeds. And it can ensure sufficient traction and braking power on muddy roads.



※ Special block edge

The special pattern block edge design, improve the driving force of the mud at the beginning of use, and improve the ability of removing stones.



※ Interlock connecting rib

The pattern interlock connecting rib, improve tire rigidity, improve grip, and can prevent uneven pattern wear.

Series	Size	LI	SI	PR	Approved Rim	Tread Depth 1/32" MM		Overall Diameter inch mm		Section Width inch mm		Max.Load S lbs kg		Max.Load D lbs kg		Max.Pressure psi kpa		Revs Per Mile
65	265/65R17LT	116	113T	8PR	7.5-8.0-8.5	15.4	12.2	30.6	776	10.7	272	2756	1250	2535	1150	65	450	600
70	245/70R16LT	113	110T	8PR	6.5-7.0-7.5	15.4	12.2	29.5	750	9.8	248	2535	1150	2337	1060	65	450	703
75	215/75R15LT	100	97S	6PR	5.5-6.0-6.5	13.7	10.9	27.7	703	8.5	216	1764	800	1609	730	50	350	750
	225/75R15LT	102	99S	6PR	6.0-7.0	13.7	10.9	28.3	719	8.8	223	1874	850	1709	775	50	350	734
	235/75R15LT	104	101T	6PR	6.0-6.5-7.0	13.7	10.9	28.9	733	9.3	235	1984	900	1819	825	50	350	720

Bold designates measuring rim width. These data can be changed by manufacturer without prior notice.